

GARMIN



Navigation and Dispatching Integration

Recognize operational efficiency and cost savings with the GO7/Garmin combination

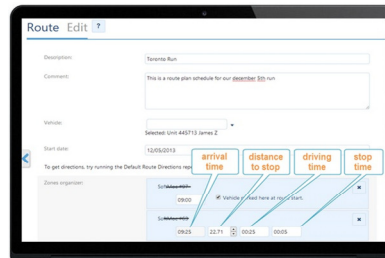
GO7 has developed a unique relationship with Garmin: you can integrate GO7 technology with select Garmin devices for added efficiencies in dispatching and field communications. Fleet Managers can easily interact with their drivers by sending messages to the Garmin device. All messages are date-stamped and recorded, creating a permanent log of all communications.

- ✓ Two-way communication between drivers and dispatchers
- ✓ Send stops and routes directly to the vehicle
- ✓ Drivers can change their status by touching the screen
- ✓ Monitors for device disconnection, ensuring 100% up-time for communication
- ✓ All messages are verified and time-stamped
- ✓ Driver status information can be color coded
- ✓ All driver information is displayed on a map
- ✓ Safe mode option eliminates driver distraction

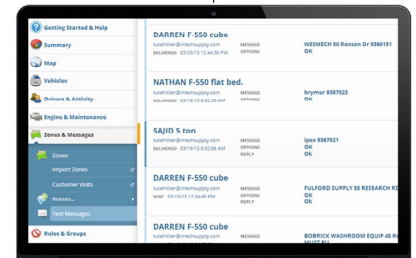
Garmin with IOX Technology

The GO7 device allows for Garmin integration with the use of GO7's IOX expander. With a few simple plug-and-play installation steps, the system will be ready for use within minutes. The GO7 is compatible with Garmin devices that support the FMI 45 or FMI 15 cable.

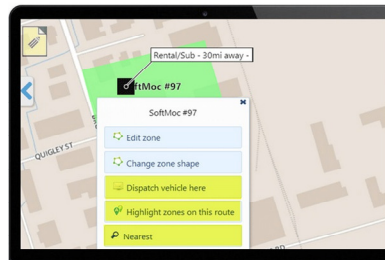
Edit Route Plan



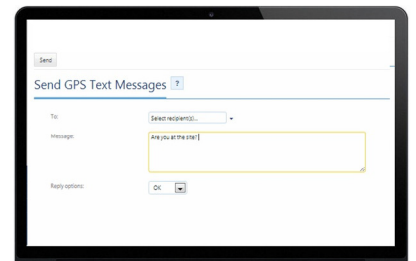
2 Way Messaging



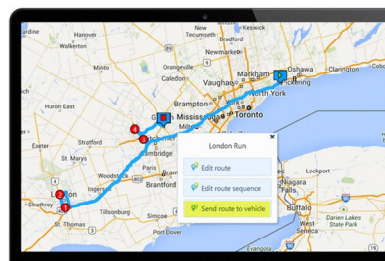
Map Dispatch



Dispatch Text Messages



Send - View Route Plan



Dispatch on the Fly

