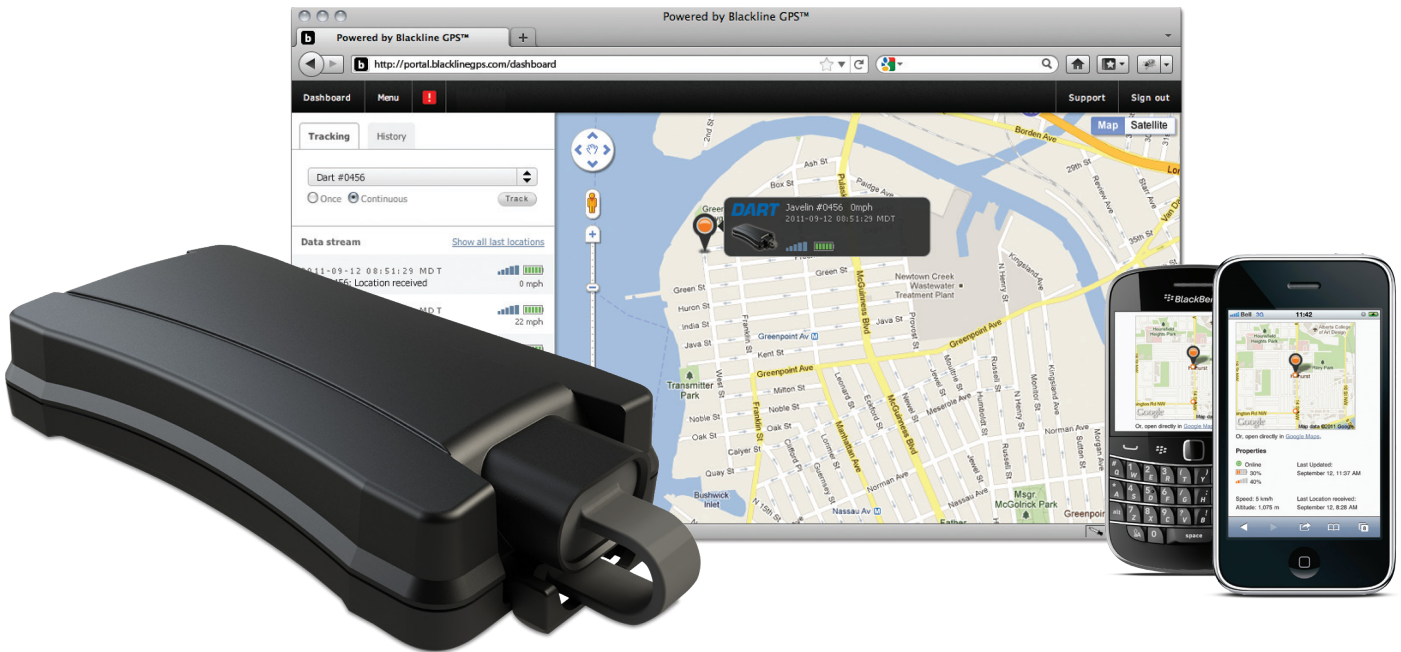




Professional-grade Covert Tracker











Tracking has evolved

Keep your eye on the target with the newest member of Blackline GPS' covert tracking family. By combining Blackline's leading tracking technologies with a low-cost, high efficiency design, Dart delivers performance, durability and customization. Dart is built to last with a weather-sealed enclosure rated at Ingress 65 and is ready for deployment right out of the box.

An optional rare-earth magnet providing 112 lbs of mounting force ensures that Dart will remain where it has been deployed until its mission has been completed. The high-efficiency 2600 mAh Lithium-ion battery provides an operating time between charges of up to 10 days depending upon device usage. Like all Blackline products, tracking intervals can be customized, allowing the device user to achieve the ideal balance between location updates and battery life. Dart also provides greater value to its users with multiple service plans that provide tracking intervals between ten minutes and ten seconds, keeping costs down while providing just the right amount of accurate location data.

Users can view Dart's tracking information, see device status and change the system settings through Blackline's new Business Portal application. Real-time mapping, continuous tracking, schedule management and configuration of alerting are only a few features that the portal provides with every Dart tracking device.

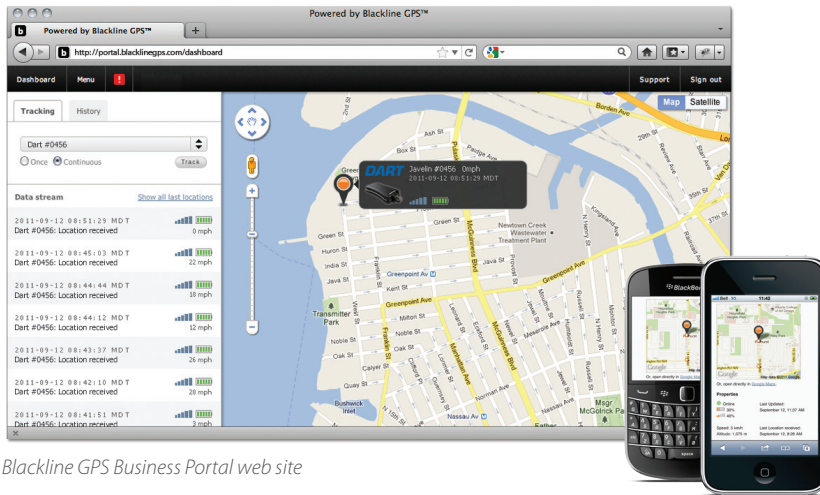
To unlock Dart's greatest potential, add Blackline's External Battery accessory. Holding more than 13 times the power capacity of Dart's built-in battery, the external battery significantly increases Dart's operating time.

-  **Store & Forward**
Events are stored and forwarded to the server
-  **Zones**
Instant location entry and exit alerts
-  **GPS Tracking**
Live locating and 5 second to 15 minute tracking
-  **Cell ID Location Technology**
Locations through Cell ID when GPS is unavailable
-  **Mobile Messaging**
Alerts are sent to users via email & SMS
-  **Efficient 2600 mAh Battery**
Rechargeable Li-ion battery provides up to 10 days of operation
-  **Magnetic Mounting**
Optional rare-earth magnet ensures secure attachment to vehicle
-  **Sealed Design**
Custom waterproof & dust-proof enclosure





Dart with optional magnetic mount attached



Blackline GPS Business Portal web site

Business Portal mobile site

Benefits

- Self-contained tracking device is designed to professional performance standards at an economical price.
- Increases awareness of a surveillance target's activity.
- Quickly map a target vehicle location in the new Blackline Business Portal.
- Track-on-motion automatically records target activity.
- Customizable scheduling provides user-controlled power management.
- Easy to learn device and user interface.

Advantages

- Ultimate Sense® 2 high sensitivity GPS antenna makes the most of weak signal coverage.
- Easy to use web-based Blackline Business Portal for efficient mapping and administration. No software to install.
- Quickly map previous routes with data from origin to destination.
- Firmware upgradable over-the-air accommodates future enhancements.

Specifications

Size & Weight

Size without magnetic mount: 60 mm W x 24 mm H x 116 mm L (2.36" x .94" x 4.57")
 Size with magnetic mount: 60 mm W x 35 mm H x 116 mm L (2.36" x 1.38" x 4.57")
 Weight without magnetic mount: 180 g (6.3 oz)
 Weight with magnetic mount: 261 g (9.2 oz)

Optional Magnetic Mount

Factory configuration: Single rare earth magnet
 Mounting options: Tie-wrap, Velcro®, screws and adhesive (not included)
 Magnet pull force: 112 lbs

Button & Indicator Light

Button: Power on/off, indicator light wake-up
 Green indicator light: Power and wireless connection status

Wireless Communication

Radio: Quad-band GSM/GPRS (800, 900, 1800, 1900 MHz)
 Antenna: Internal quad-band
 Bi-directional communication
 Firmware upgrade over-the-air (FOTA)

Location Technology

GPS Radio: 20 Channel high sensitivity, mobile assisted
 GPS Antenna: Internal Ultimate Sense® 2 GPS antenna enhances operation in weak GPS signal conditions
 GPS Accuracy: ~5 m (16 ft) outdoors, ~50 m (165 ft) indoors
 GPS Real-Time Location Response Time: ~20 seconds
 Cell ID Technology: Makes use of multiple cell IDs where available
 Cell ID Accuracy: ~200 m to 1,000 m

Mobile Messaging Methods

Email, SMS (text message)

Alert Messages

Vehicle movement detection; Notification messages; Low internal battery;
 Zone entry/exit; On-network (power-on & return-to-coverage); Off-network (power-off & out-of-coverage time-out)

Scheduler

Features include: Periodic automatic location, track-on-motion
 Scheduler intervals: Service plan dependant
 Store & forward: Up to 12,000 event messages

Power & Battery

Rechargeable Li-ion battery: 2600 mAh Li-ion
 Battery Life: Up to 10 days at 1-minute track-on-motion, 2 hour/day drive time

Environmental

Storage temperature: -30 to 75° C (-22 to 167° F)
 Operating temperature: -20 to 55° C (-4 to 131° F)
 Ingress protection: IP65, 100% condensing humidity
 Charging temperature: 0 to 45° C (32 to 113° F)

Regulatory Compliance

FCC, IC EU limits
 Contains: FCCID W77BLIGSM1, IC 8255A - BLGSM1, CE 0682

Device Requirements

Blackline GPS activated service plan
 GSM/GPRS Wireless communication coverage
 GPS Signal coverage required for GPS locating

Warranty

One year limited factory warranty

Activated Service Plans and Wireless Coverage

Wireless coverage: Nearly 150 countries
 Service plan options: Contact Blackline GPS

Blackline Business Portal Web Application

Features Include: Event history, device location mapping, device management, alert and notification settings, and more.